

BENGAL ENERGY DIGITAL TRANSFORMATION

OCTOBER 2022

Bengal
ENERGY LTD.



Corporate Snapshot

Bengal Energy is a Canadian TSX listed company onshore assets in Australia's Cooper Basin.

Quick Facts

Listed on TSX	BNG
Employees + Contractors	Around 50
Producing	200 bpd
Resources	20 MMboe

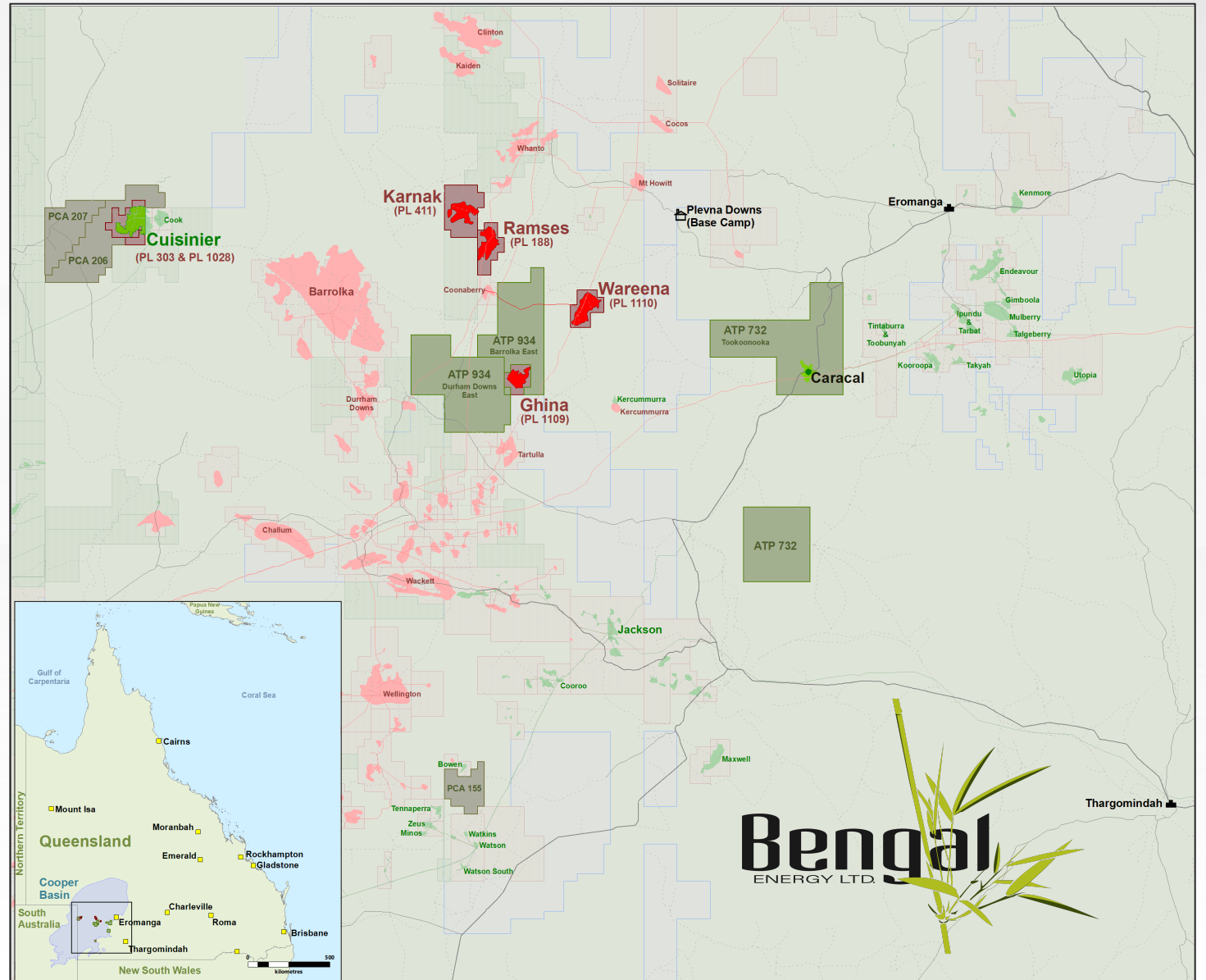


Exploring and producing hydrocarbon assets in Australia for more than 15 years.



Asset Overview

- ❖ All assets remote Queensland
- ❖ In the midst one of last free flowing river systems in the world (Channel Country)
- ❖ Rich cultural heritage and paleontological terrain
- ❖ Limited access to infrastructure
- ❖ Working with local teams, councils and landholders very closely





A day in the life of Bengal's Workforce

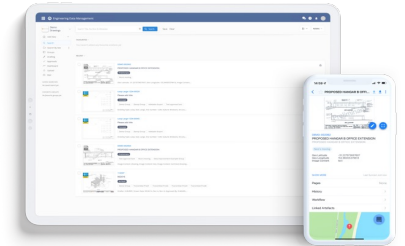
06:30 am
Pre-start and Toolbox



Journey Management



RECEIVES WORK ORDER



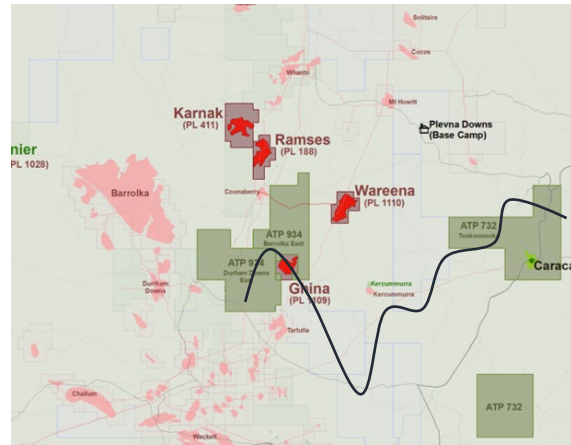


A day in the life of Bengal's Workforce

DRIVES 200 miles TO SITE



**VEHICLE AND LONE WORKER
STATUS TRACKED**



Status



09:30 am

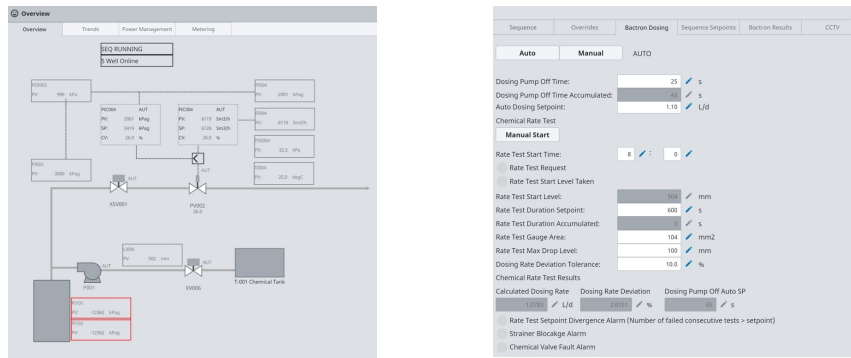
**ARRIVES ON SITE, USES TABLET,
AUTOMATICALLY CONNECTS TO
WIFI**



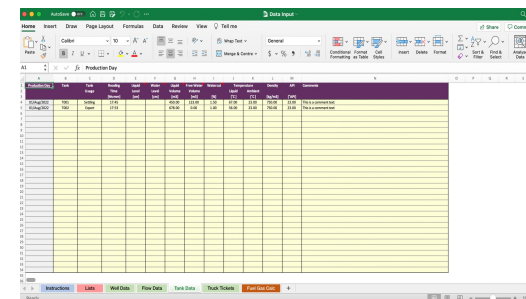


A day in the life of Bengal's Workforce


USES IGNITION SCADA AND DATA HISTORIAN



COMPLETES DAILY REPORT AND SENDS TO PRODUCTION ACCOUNTING SOFTWARE



MANAGER
REVIEWS DATA
AND COMPLETES
DAILY REPORT



Bengal Energy (Australia)

Daily Report

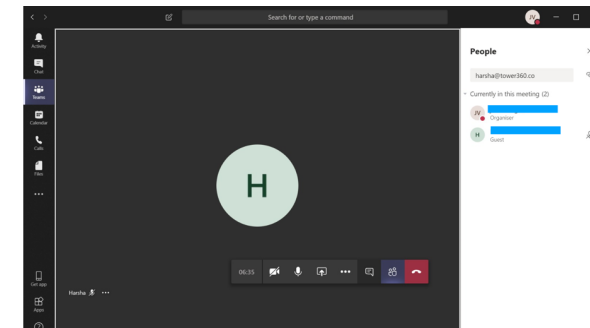
4/4/2016

Field Z - UNRECONCILED

CONFIDENTIAL

	Share X	Share Y	TOTAL		
Export Volumes	Gas Exported (TJ)	172.431	61.038	233.469	
	Gas Exported (mm³)	4.17	1.44	5.61	
	Gas Imported (TJ)			0.000	
				0.738 Ratio Set Point	
Condensate Pumped	Condensate Transferred (m³)	1189.00	418.00	1607.00	
				0.740 Ratio Set Point	
Production Volumes	Refinery Offshore (mm³)			1.40	
	Refinery Offshore (mm³)			4.17	
	Field Gas Lifted (mm³)			6.0100	
	Field Gas Lifted (mm³)			1352	
	Condensate Produced (m³)			1779	
	T-501 Condensate (m³)			1426	
	Water Production (m³)			229	
			242.57		
Gas Disposition	Gas Disposition (m³)			242.57	
	W-1501			0.00	
	W-1503			0.00	
Well Data	Well Daily Average				
	Flow m³/h	FTHP %	FTHT %	Choke	
	W-1501	7.9	120	76.4	80
	W-1502	17.4	109	79.4	82
	W-1503	0.0	0	0.0	0
	W-1101	19.4	118	78.1	73
	W-1103	7.3	107	74.5	100
	W-1104	2.0	107	60.2	100
	W-1107	6.1	112	71.3	90
	W-1108	13.4	119	76.2	100
Plant Data	Offshore Pressure (bars)			109.11	
	Plant Inlet Pressure (bars)			86.06	
	Plant Exit Pressure (bars)			48.89	
	Average CV (M/min)			41.35	
HSE/Integrity					
	Production to plan, no other issues.				
Comments					

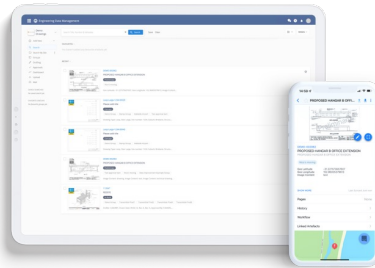
MORNING CALL ON TEAMS FROM SITE



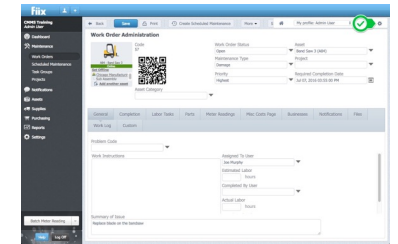


A day in the life of Bengal's Workforce

REVIEWS DRAWINGS AND MARKUPS ON REDEYE



SCAN TAG AND COMPLETES WO



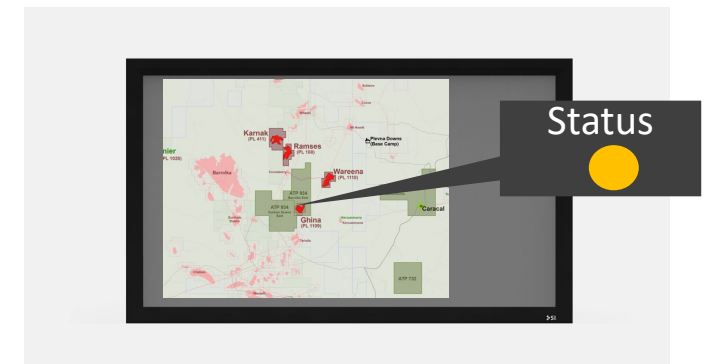
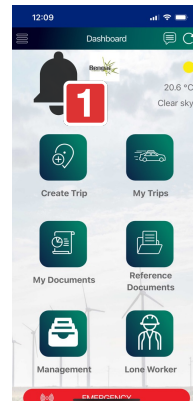
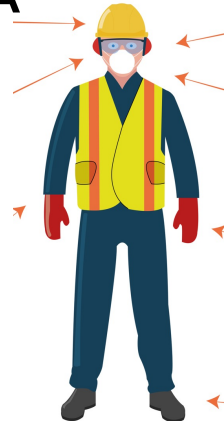
CHANGE IN STATUS OF LONE WORKER

01:30 pm

STATUS



CANARIA®

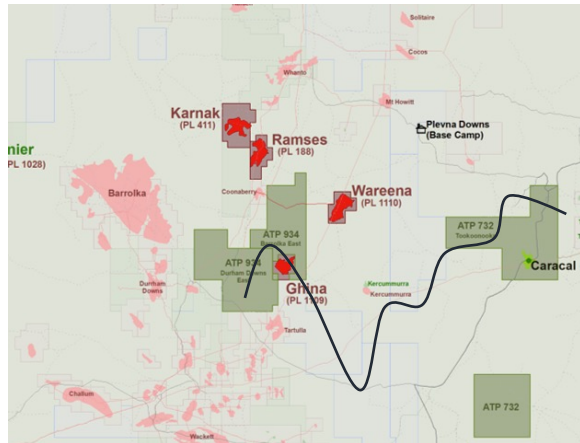


- Canaria Heat Stress Alert
- On ear vibration & flashing red light
- JMS Alert on Mobile App
- Alert in OPS CENTRE



A day in the life of Bengal's Workforce

03:00 pm
CHECKS IN JMS



Status



12:27
← Journey Management Plan Ago Vi

Journey Plan Information

Driver
Sharon Da Luz

GPS Device
No external GPS device selected

Vehicle Reg. #

Year Type

Make/Model Color

Passengers / Additional Drivers

Additional Passengers

+ SUBMIT +

DRIVES BACK



05:00 pm
COMPLETES CHECK IN AT
BASE, GOES HOME

CANARIA®



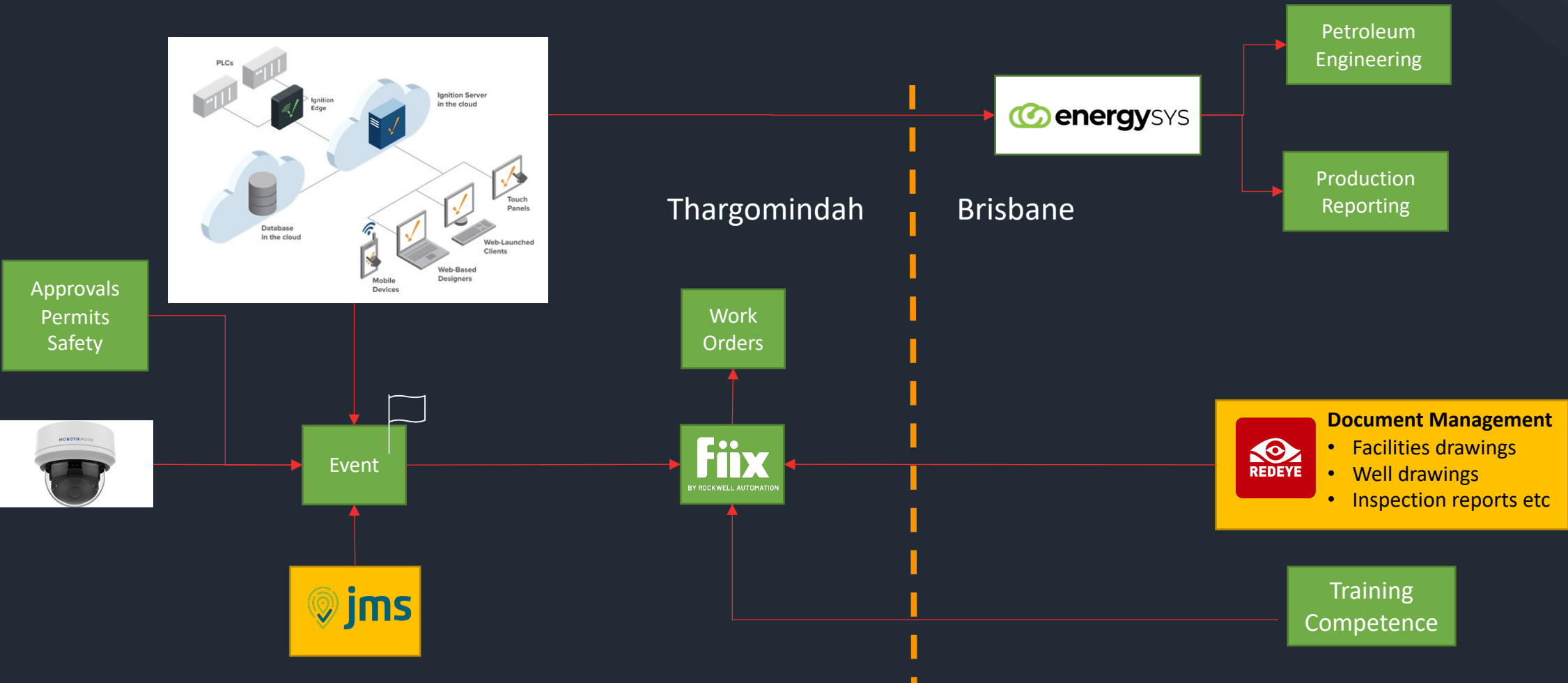
SYSTEM ARCHITECTURE OVERVIEW

Design Principles:

Off the shelf / Cloud based / Value for money

Enabling

Remote normally unmanned operations



QUESTIONS

Bengal
ENERGY LTD.

