

# BENGAL ENERGY DIGITAL TRANSFORMATION

OCTOBER 2022

**Bengal**  
ENERGY LTD.



# Corporate Snapshot

Bengal Energy is a Canadian TSX listed company onshore assets in Australia's Cooper Basin.

## Quick Facts

Listed on TSX	BNG
Employees + Contractors	Around 50
Producing	200 bpd
Resources	20 MMboe





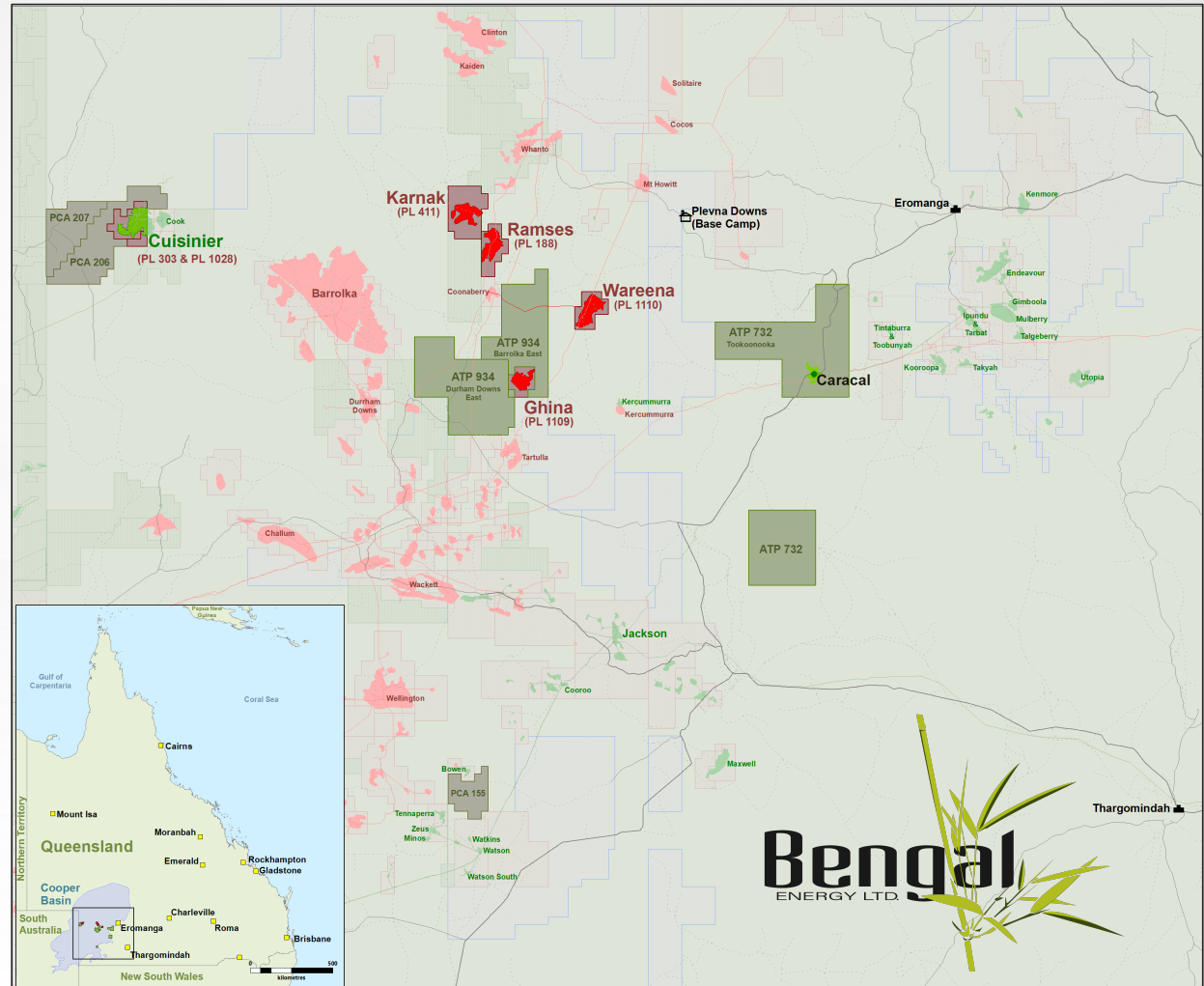


Exploring and producing hydrocarbon assets in Australia for more than 15 years.



# Asset Overview

- ❖ All assets remote Queensland
- ❖ In the midst one of last free flowing river systems in the world (Channel Country)
- ❖ Rich cultural heritage and paleontological terrain
- ❖ Limited access to infrastructure
- ❖ Working with local teams, councils and landholders very closely





## A day in the life of Bengal's Workforce

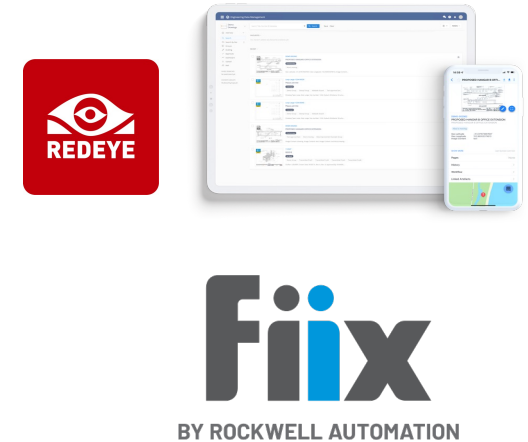
**06:30 am**  
**Pre-start and Toolbox**



**Journey Management**



**RECEIVES WORK ORDER**





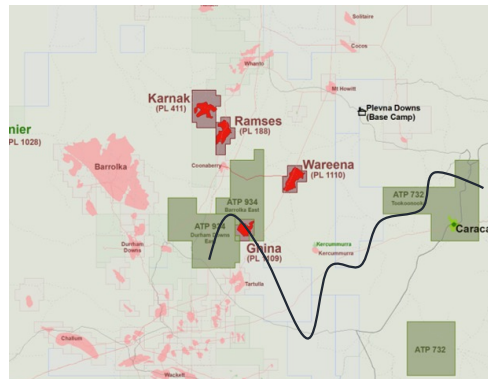


# A day in the life of Bengal's Workforce

**DRIVES 200 miles TO SITE**



**VEHICLE AND LONE WORKER  
STATUS TRACKED**



**Status**



**09:30 am**

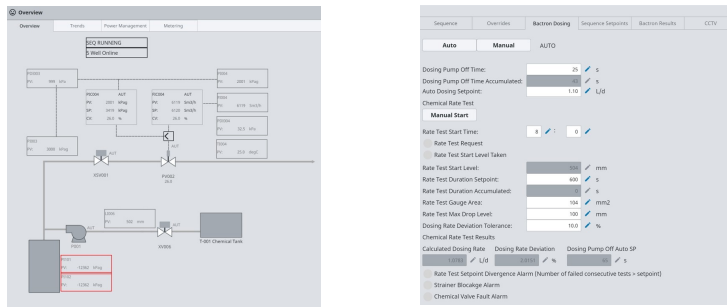
**ARRIVES ON SITE, USES TABLET,  
AUTOMATICALLY CONNECTS TO  
WIFI**



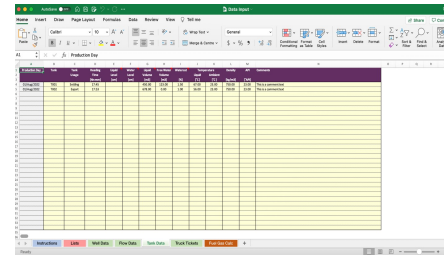


# A day in the life of Bengal's Workforce

USES IGNITION SCADA AND DATA HISTORIAN



COMPLETES DAILY REPORT AND SENDS TO PRODUCTION ACCOUNTING SOFTWARE



MANAGER  
REVIEWS DATA  
AND COMPLETES  
DAILY REPORT

Bengal Energy (Australia)

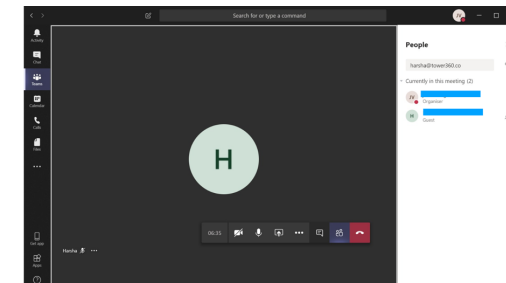
Daily Report

04/02/19

Field Z - UNRECONCILED

Export Volume	Line Exported	Flow		Rate X	Rate Y	0.750 Ratio Set Point
		Flow	Rate			
		(m³/sec)	(m³/sec)			
Condensate Pumped	Condensate Transferred	Flow		Rate X	Rate Y	0.750 Ratio Set Point
		Flow	Rate			
		(m³)	(m³/sec)			
Production Volumes	Production Volume	Flow		Rate X	Rate Y	0.750 Ratio Set Point
		Flow	Rate			
		(m³)	(m³/sec)			
Well Data	Flow	Flow		Rate X	Rate Y	0.750 Ratio Set Point
		Flow	Rate			
		(m³)	(m³/sec)			
Plant Data	Pressure (bar)	Flow		Rate X	Rate Y	0.750 Ratio Set Point
		Flow	Rate			
		(m³)	(m³/sec)			
HSE Integrity	Average CV (M/min)	Flow		Rate X	Rate Y	0.750 Ratio Set Point
		Flow	Rate			
		(m³)	(m³/sec)			
Comments	Production to date, no other issues.	Flow		Rate X	Rate Y	0.750 Ratio Set Point
		Flow	Rate			
		(m³)	(m³/sec)			

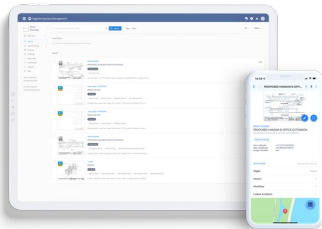
MORNING CALL ON TEAMS FROM SITE



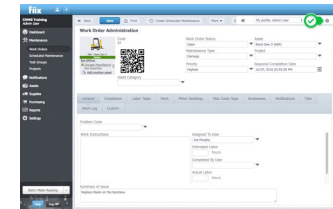


# A day in the life of Bengal's Workforce

## REVIEWS DRAWINGS AND MARKUPS ON REDEYE



## SCAN TAG AND COMPLETES WO



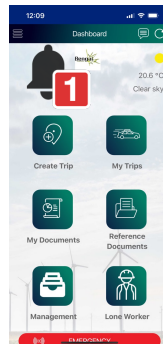
## CHANGE IN STATUS OF LONE WORKER

01:30 pm

STATUS

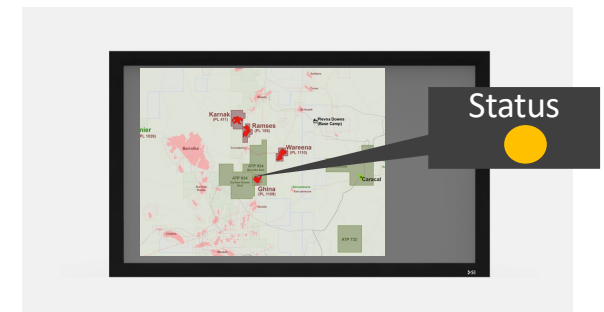


CANARIA®



- Canaria Heat Stress Alert
- On ear vibration & flashing red light
- JMS Alert on Mobile App
- Alert in OPS CENTRE

## CONTROL CENTRE ALERTED, CHECK ON CAMERA

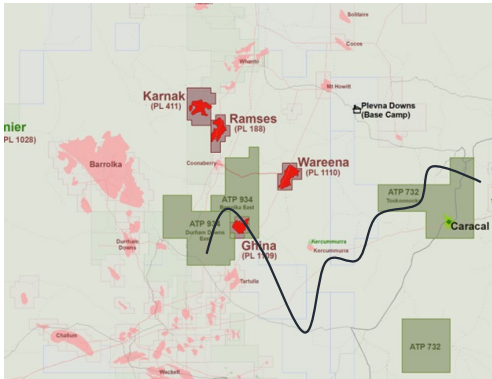






# A day in the life of Bengal's Workforce

03:00 pm  
CHECKS IN JMS



12:27

Journey Management Plan Ago VI

Journey Plan Information

Driver: Sharon Da Luz

GPS Device: No external GPS device selected

Vehicle Reg. #:

Year: Type:

Make/Model: Color:

Passengers / Additional Drivers:

Additional Passengers:

SUBMIT

Status



DRIVES BACK



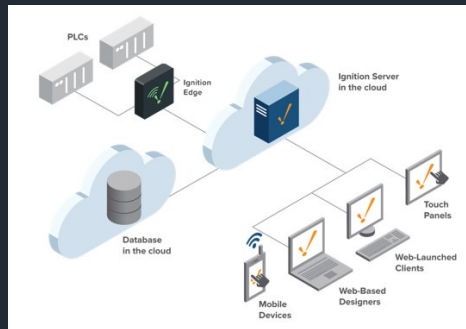
05:00 pm  
COMPLETES CHECK IN AT  
BASE, GOES HOME



# SYSTEM ARCHITECTURE OVERVIEW

## Design Principles:

Off the shelf / Cloud based / Value for money  
Enabling  
Remote normally unmanned operations



Approvals  
Permits  
Safety



Event



Thargomindah

Work  
Orders

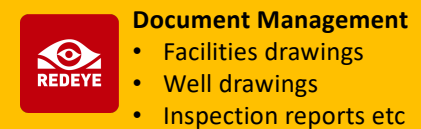


Brisbane



Petroleum  
Engineering

Production  
Reporting



Training  
Competence

# QUESTIONS

**Bengal**  
ENERGY LTD.

